

WHITE SPOT SYNDROME VIRUS (WSSV) RAPID TEST KIT

Catalogue No. P11-01-01-020

INTENDED USE

White Spot Syndrome Virus (WSSV) Rapid Test Kit is an immunochromatographic assay designed for the qualitative detection of WSSV infection in shrimp.

SUMMARY AND EXPLANATION OF TEST

WSSV is a highly infectious agent that causes mass mortality in farmed penaeid shrimp worldwide. Detection of WSSV is very important for management of shrimp farms. WSSV Rapid Test kit is a management tool based on immunoassay for shrimp aquaculture that can be used to assess the level of WSSV infection in shrimp. The beneficial features of this kit are simple, convenient and quick results can be obtained without the requirement of sophisticated tools or special skills.

TEST STRIP

The test device consists of a membrane strip and plastic case. The membrane strip is also pre-coated anti-WSSV antibody on the test (T) zone and control antibody on the control (C) zone.

REAGENTS AND MATERIALS SUPPLIED

1. WSSV *Rapid Test* cassette (20 pieces)
2. Extract Buffer (2 dropper bottles)
3. Microcentrifuge tube (20 pieces, single use only)
4. Disposable pestle (20 pieces, single use only)
5. Disposable dropper (20 pieces, single use only)
6. One copy of instruction manual (product insert)

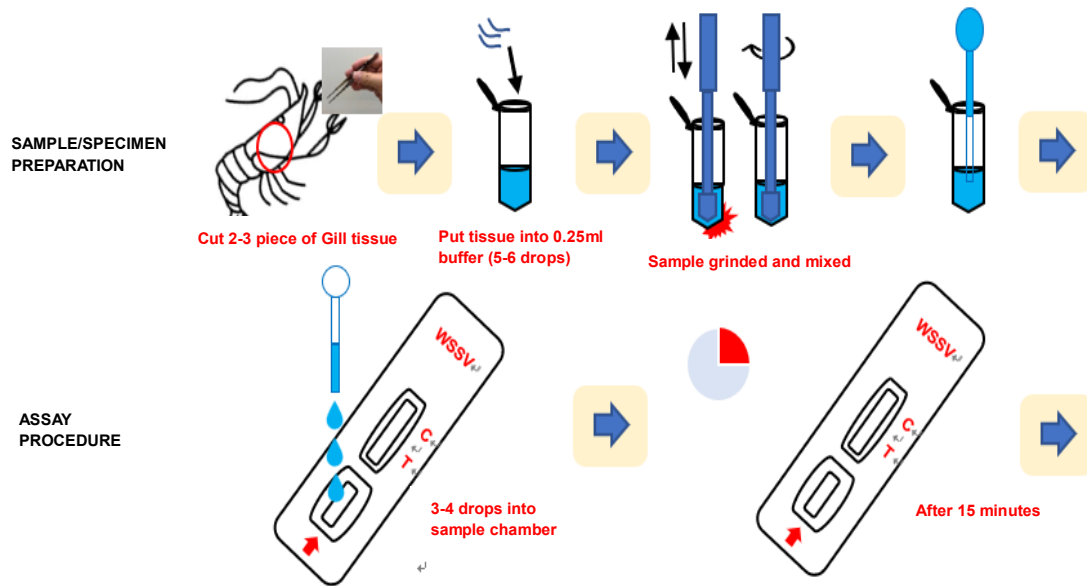
MATERIALS REQUIRED BUT NOT SUPPLIED

1. Clock or timer
2. Tweezers

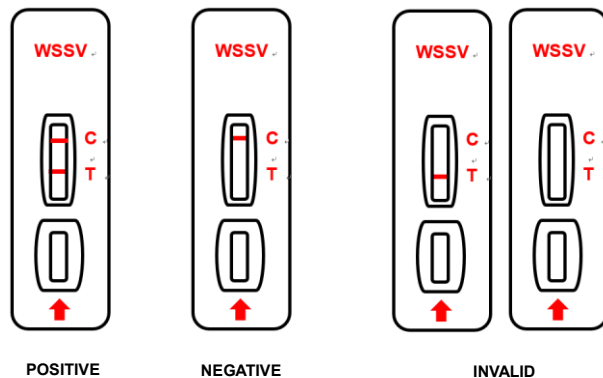
STORAGE AND STABILITY

The kit can be stored at room temperature in the sealed pouch to the date of expiration. The kit should be kept away from direct sunlight, moisture and heat. Expiration date is described on the product package.

DIAGRAM OF ASSAY PROCEDURE



INTERPRETATION OF RESULT



Positive result:

The pink purple band should be observed at both the test line (T) and control line (C) indicating that the shrimp was infected with WSSV.

Negative result:

The pink purple band appear only on the control line (C) indicating that no infection of WSSV or light infection beyond the sensitivity of the kit. The sample should be confirmed by PCR.

Invalid:

If there is no line at the control line(C), please retest with new kit

REMARK

This kit is used for primary screening for WSSV infection. The negative result sample should be confirmed by nested PCR or higher sensitive methods.